

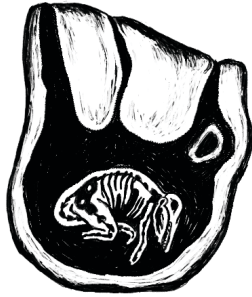
**Dear Visitor**

This questionnaire was made in order to aid us diagnose and give the most appropriate treatment for you. Choose one out of four images in each clause. These images are taken from reconstructed scenes from Miriam the Jewess, the matriarch of Alchemy and spiritual mother to the pharmacists who treat you. We ask you to wonder through the marked course of the exhibition, between four stations positioned in the space, linger and examine each scene, read the text beside them and circle the chosen image from each scene.

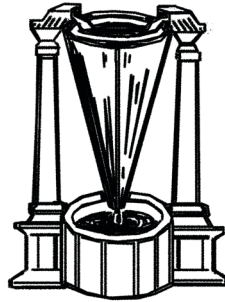
**Scene A: Miriam in the field, her laboratory**



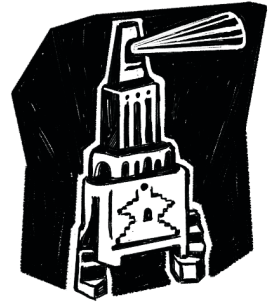
a.a



a.b



a.c



a.d

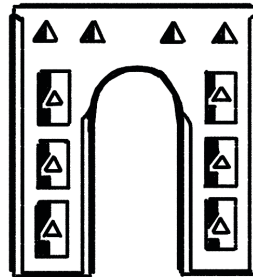
**Scene B: Miriam's inventions**



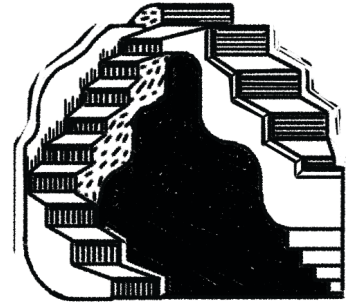
b.a



b.b



b.c



b.d

**Scene C: Miriam at King's Court**



c.a



c.b

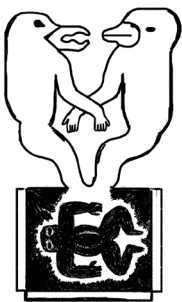


c.c



c.d

**Scene D: Miriam's Axiom**



d.a



d.b



d.c



d.d

In addition, mention below one symptom you have been experiencing often - whether it is ache, nausea, dizziness, irregular sleep patterns, recurring dream, consuming sadness, verbal diarrhea or other inconvenience:

# About the Project

---

'Night Pharmacy' is another chapter in the work of 'The Test Tube' group members, artists Elinor Sahm and Michal Roth and curator Tali Kayam, who examine the relation between the artistic portfolio and the medical chart.

The research conducted by the groups members towards this chapter focused on the origins of Alchemy- a protoscience preceding conventional practices of chemistry and medicine as we know them today, through the figure of the spiritual mother of this realm of knowledge; Miriam the Jewess.

While science and medicine are viewed in terms of patriarchal history as being led by men- the founding mother and great inventor of Alchemy is a woman known as Miriam the Jewess. This story of Miriam is wrapped in uncertainty, brought to us in fractured quotations from the writings of various alchemists throughout history. Some thought that this was the sister of Moses, others claimed a romantic relationship between her and Jesus and thus hinted in fact that it was Mary Magdalene. Finally, researchers who crossed evidences agree that Miriam the Jewess lived and probably operated in Alexandria between the first and third centuries BCE.

The singularity of Miriam as an alchemist lies in her recognition that amalgamation of materials can create a fusion that changes their qualities. 'The Axiom of Miriam' is an enigmatic phrase which describes the union of elements: "One becomes two, two becomes three, and out of the third comes the one as the fourth". The first alchemists, and Miriam alongside them, aspired to reveal how can one transform base metals into pure gold and searched for a substance that could grant immortality. From Miriam's point of view, alchemical procedures were linked to these goals: the base metal dies during the heating process and is reborn as gold. as the immortal element.<sup>1</sup>

On a broader context, Miriam the Jewess is the spiritual mother of the members of the 'Test Tube' group. Since Alchemy was perceived in ancient times, as art. A distinct symbolical aesthetic quality could be attributed to Miriam's inventions; The distiller she invented was called 'Kerotakis', after the color palette used by ancient greek artists to mix the primary colors black, yellow, white and red with wax.

In their research the 'Test Tube' group members use the same primary colors to diagnose the shaken foundations in the body of patients- who observe them. Patients are asked to pick and choose from a variety of images presented in front of them. The sum of their accumulated choices associate them with having one of four ailments defined by Heraclitus who named them 'Humors' which share these primary colors: black bile, yellow bile, phlegm and blood. Each humor is influenced by weather temperatures and seasons and affects the patient's internal organs and mood.

'Night Pharmacy' was first presented as part of 'Sabra' festival in Curitiba, Brazil and now opens its gates in the Hansen house, Jerusalem- stemming from a dialogue with the history of the hospital, the legacy of therapy, research and discovery.

The exhibition was created as part of a final project in the curatorial class master's degree program in the policy and theory of the arts at Bezalel.

---

<sup>1</sup> Raphael Patai, Maria the Jewess inside The Jewish Alchemists: A History and Source Book, Princeton University Press, 1994, pp 60-81.

